



苏州市东钢精工科技有限公司  
Suzhou Donggang Precision Technology Co.,Ltd

Fax: +86 0512 - 65761009

Tel: +86 0512- 65761109 / 0512- 65761399

Website: <https://www.turningpartsfactory.com>

Email: [info@turningpartsfactory.com](mailto:info@turningpartsfactory.com)



DONGGANG

Address: 中国江苏省苏州市相城区阳澄湖凤阳路432号  
No. 432, Fengyang Road, Yangcheng Lake, Xiangcheng District, Suzhou,  
Jiangsu, China



# 社媒账户 Social Media Account



关注我们 Follow Us

**Whatsapp:**

+86 13861324919

**Instagram:** suzhou\_donggang

**Tiktok:** suzhou\_Donggang

**Facebook:**

Suzhou Donggang Precision  
Technology

**Twitter:** suzhou\_donggang

**Youtube:** SuzhouDonggang

# 目录

# CONTENTS

01

## 公司介绍 Company Intro

来自中国苏州的高精密非标数控车削件工厂

High Precision Non-Standard CNC Machining Turning Parts Factory  
based in Suzhou, China.

02

## 产品服务 Products and Services

精密切削部件加工为主，主要生产消费类电子配件、汽车配件、  
通讯配件、光学仪器、医疗器械等相关产品的极精密车削件

Mainly manufacture extreme precision turning parts for consumer  
electronic accessories, auto parts, communication accessories, optical  
instruments, medical equipments, and other related products.

03

## 企业优势

成熟的技术体系，与时俱进的生产设备，能力精湛的工人，  
标准化的工厂，符合国际检验标准的认证，合理的价格

Mature technical support, up to date equipments, skilled workers,  
standardized factory, follow international quality standards,  
reasonable price.



# 01 公司介绍

## Company Introduction

东钢精密科技有限公司成立于2005年，是一家从事精密零部件加工及原材料供应的生产型企业。

Founded in 2005, Donggang Precision Technology Co., Ltd. is a production-oriented enterprise engaged in precision parts processing and raw material supply.



# 公司介绍

## Company Introduction



东钢精工成立于2005年，是一家集原材料及精密零部件一体化的生产制造型企业，主要生产马氏体、奥氏体不锈钢研磨棒；汽车、通讯、医疗、3C电子、光学仪器仪表相关轴类、阀芯、塑胶埋植螺母及连接器类精密车削零部件，产品覆盖中国、日本、德国、波兰、越南、泰国等世界各地，东钢拥有自己的标准化厂房、数十台日本进口的生产及检测设备。日本CNC数控车床、车铣复合、CNC立式加工中心，台湾无芯磨床，日本东京精密三坐标，二次元、粗糙度仪、轮廓度仪、气动量仪等精密检测设备，为世界各地的采购商提供优质服务

Founded in 2005, Donggang Precision Technology Ltd., is a manufacturing enterprise supplying raw materials and precision parts, we mainly producing martensitic and austenitic stainless steel grinding rods. Applications including automobile, communication, medical, 3C electronics, optical instrumentation related shaft, valve core, plastic embedded nuts and connector precision turning parts. The supply distribution covers China, Japan, Germany, Poland, Vietnam, Thailand and other parts of the world. Donggang has its own standardised factory, dozens of imported production and testing equipment from Japan includes Japan CNC lathe, turning and milling compound, CNC vertical machining center, Taiwan coreless grinding machine, Japan Tokyo precision three coordinates, two elements, roughness meter, profile meter, gas momentum meter and other precision testing equipment, to provide quality services for buyers around the world

工厂  
Factory

非标件  
Non-Standard Parts

车削件  
Turning Parts



# 照片墙

Photo Wall



# 发展历程

Development History



## 2005

发展历程  
Development History

苏州市东钢精工科技有限公司成立  
Suzhou Donggang Precision  
Technology Ltd., Co. was established

## 2006

发展历程  
Development History

通过了国际质量管理体系认证  
Passed ISO9001: 2000 International  
Quality Management System  
Certification

## 2012

发展历程  
Development History

营业额突破亿  
Trading revenue over 100 million RMB

## 2018

发展历程  
Development History

通过了汽车行业质量体系认证  
Has passed IATF16949: 2016  
automotive industry quality  
system certification.

## 2023

发展历程  
Development History

至今  
To the present



# 合作伙伴

Cooperative partner



## 合作伙伴 Cooperative partner

苏州东钢客户总量超过上百家，年销售总超过二千万人民币。

良好、稳定的品质是我们能够长期合作的基础，合理的价格是我们共同发展的保障。

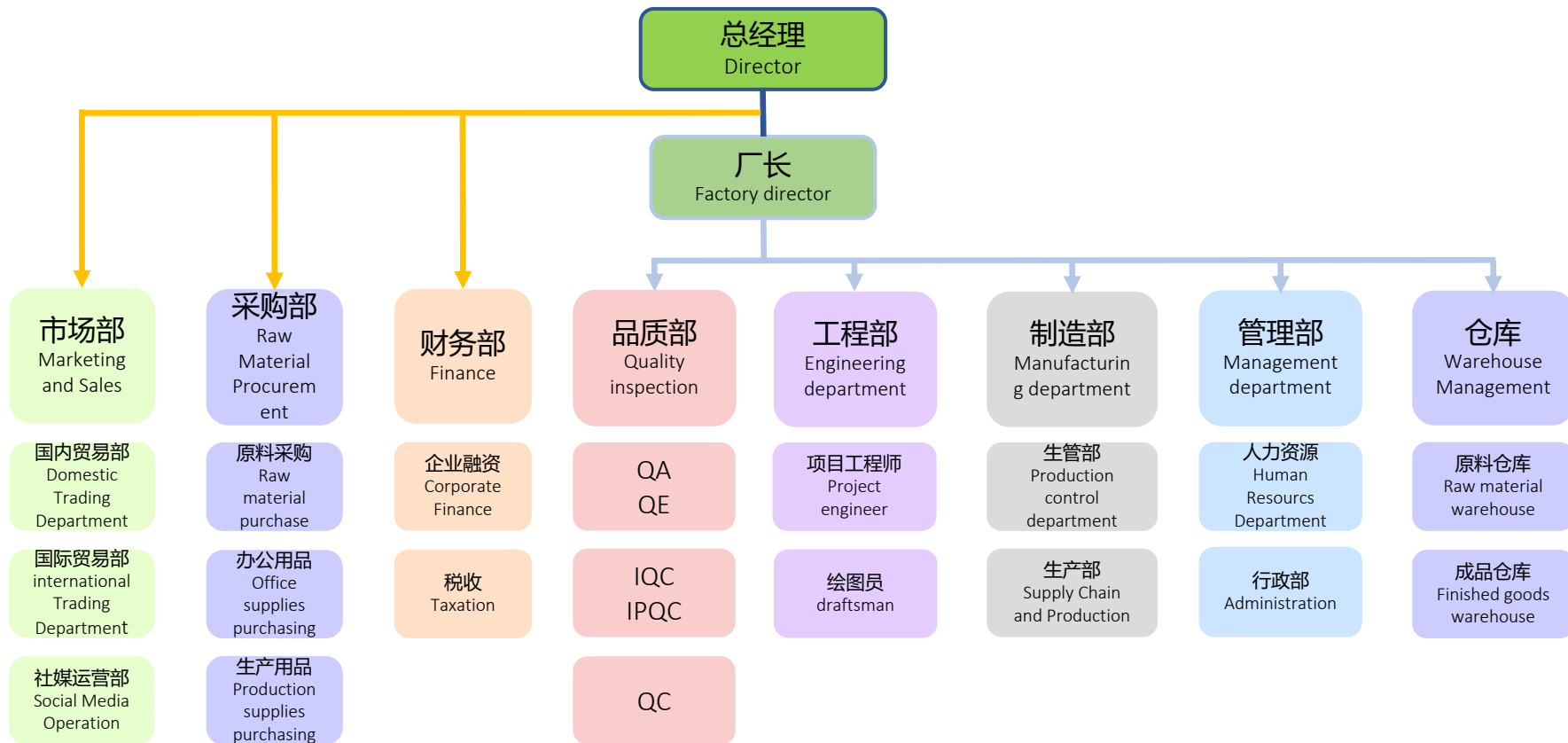
The total number of customers of Suzhou Donggang exceeds 100, and the total annual sales exceed 20 million.

Good and stable quality is the basis for our long-term cooperation, and reasonable prices guarantee our common development



# 公司结构

Company Structure



# 团队介绍

## Team Introduction

总共百名员工 100 Employees in total



### 总经理

Director

超过20年行业经验

With more than 20 years experience in the industry.

Tel: +86 13912620099

Email: jsdonggang@126.com



### 市场部

Marketing and Sales

我们有深知产品的销售团队，中文与英文可双语沟通

Deep knowledge with our products and exceptional customer service skills with Chinese and English available



### 生产部

Production

技术精湛的工程师会根据图纸需要尽全力地满足客户需求，高质量地产出  
Specialized skilled engineers will deliver the best quality products to our customers with available drawings.



### 行政&财务&技术与其他

Admin&Finance&Tech&Others

只挑对的人，做合规的账，引进最好的设备硬件软件  
Only hire the qualified workers, record the right accounts, introduce the most suitable equipments, hardware and software.

# 现有设备

Available Equipments



**磨床设备**

Grinding Machine

MK-1040



**滚牙设备** Tobest, TB-25S

Thread-rolling Machine



**进口机台**

Machine from Japan



日本津上、Star  
Tsunami&Star (Japan)



**进口机台**

Machine from Japan

CK6064



**测量设备**  
**硬度计**

Measuring  
Equipment  
-Hardness  
Tester



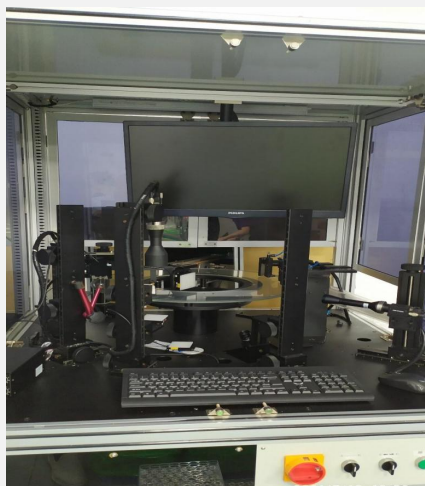
**测量设备**

Measuring Equipment

MVB-3020

# 现有设备

Available Equipments



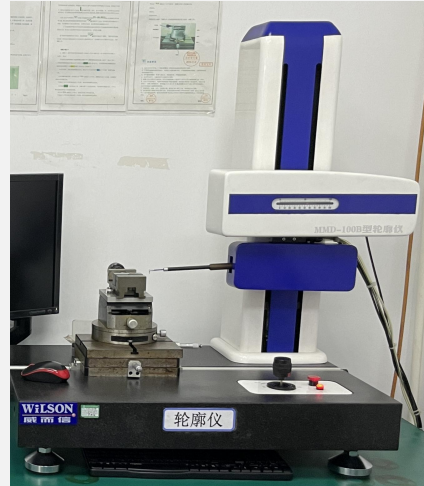
## CCD光学影像筛选机

CCD Optical image screening machine



## 测量设备-粗糙度仪&同心度仪

Measuring Equipments - Roughness Tester & Concentricity Tester



## 测量设备-轮廓仪

Measuring Equipments - Profilometer



## 测量设备-东京精密三次元

Measuring Equipments - (SVA600A) Tokyo Coordinate Measuring Machine

## 磨床设备 raw material warehouse



### JHC-18S 规格参数

### JHC-15S Model Specification Table

- 标准工作台工作直径Standard table working diameter.....  $\Phi 1 \sim \Phi 50\text{mm}$
- 特别工作台工作直径Special working table diameter.....  $\Phi 40 \sim \Phi 100\text{mm}$
- 砂轮grinding wheel.....  $\Phi 455 \times 205 \times \Phi 228.6$
- 导轮guide wheel.....  $\Phi 255 \times 205 \times \Phi 111.2$
- 砂轮转速speed of grinding wheel..... 1500R. P. M
- 导轮转速speed of guide wheel..... 10-250R. P. M
- 导轮回转角度Rotation Angle of guide wheel
  - (1) 垂直面内vertical plane.....  $-3^\circ \sim +5^\circ$
  - (2) 水平面内horizontal plane.....  $\pm 5^\circ$
- 进给量最小值Minimum amount of feed..... 0.001mm
- 机床总功率Total machine power..... 15KW
  - (1) 砂轮电动机功率Grinding wheel motor power..... 15HP
  - (2) 导轮电动机功率guide wheel motor power..... 2.2HP
  - (3) 油泵电动机功率Hydraulic pump motor power..... 1HP
  - (4) 冷却泵电动机功率Cooling pump motor power..... 0.25HP
- 使用电源Use power..... 380V 50Hz
- 机床外形尺寸machine overall dimension..... 2200×1300×1550mm
- 机床重量Machine weight..... 3100kg

# 设备参数

Equipment Parameters



## Star SB-20R type G



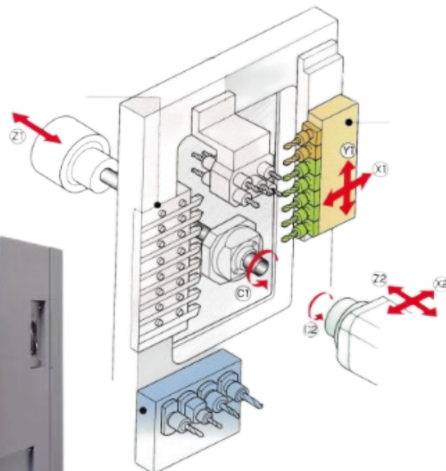
刀架台运动图 Tool rest table motion diagram		刀架台结构种类 Type of tool rest structure	刀具参数 cutter parameters	
		横向钻孔单元4轴型 Lateral drilling unit 4-axis type 	车刀 (□12mm) lathe tool (□12mm)	6
			车刀 (□10mm) lathe tool (□10mm)	7
			正面固定工具 Front fixing tool	4
			背面固定工具 Backside fixing tool	4
			回转工具 Rotary tool	4
			横向钻孔单元5轴型 Lateral drilling unit 5-axis type 	
			车刀 (□10mm) lathe tool (□10mm)	7
			正面固定工具 Front fixing tool	4
			背面固定工具 Backside fixing tool	4
			回转工具 Rotary tool	5
最大加工直径 maximum machining diameter	∅23	可交换式横向钻孔单元5轴型 Exchangeable lateral drilling unit 5-axis type 	车刀 (□12mm) lathe tool (□12mm)	6
最大加工长度 maximum machining length	205mm		车刀 (□10mm) lathe tool (□10mm)	7
加工能力 working ability			正面固定工具 Front fixing tool	4
			背面固定工具 Backside fixing tool	4
			回转工具 Rotary tool	2
			可交换式工具 Exchangeable tools	3Pos
C轴功能 C-axis function	主轴+副主轴 principal axis+sub-spindle	背面4轴单元 Backside 4-axis unit 	背面加工工具 固定工具/回转工具 backside tool fixing tool/rotary tool	4

# 设备参数

Equipment Parameters



## Star SP-23



项目 item type	规格参数 specification parameter	
最大加工直径 maximum machining diameter	Φ23mm (OP: <b>Φ25.4mm</b> )	
主轴箱最大行程 Maximum travel of headstock	标准 SCPT	205mm (MR25:196mm)
	规格规格 N. G. B specificationss	Max. 50mm (材料直径*2.5) Max. 50mm (Material diameter*2.5)
刀具数量 number of cutting tools	8 (□12mm)	
套筒座 sleeve seat	刀具数量 number of cutting tools	5 (Φ22*5)
	最大钻孔能力 Maximum drilling	Φ12mm (OP:13mm)
	最大攻丝能力 Maximum tapping capacity	M10*P1.5 (OP:M12*P1.75)
动力刀具 driving tool	刀具数量 number of cutting tools	横向专用2把+可交换式5Pos Lateral special 2PCS+Exchangeable 5Pos
	最大钻孔能力 Maximum drilling	Φ8mm
	最大攻丝能力 Maximum tapping capacity	M6*P1.0
进给速度 feed speed	35m/min (X1, Y1, Z1, X2, Z2)	
主轴分度 spindle indexing	C轴控制 C-axis control	
主轴转速 speed of mainshaft	max. 10000min <sup>-1</sup> (OP: max. 8000min <sup>-1</sup> )	
主轴电机 spindle drive motor	2.2kw (连续continuous) / 3.7kw (15min/60%ED)	
动力刀具转速 Rotary tool spindle speed	max. 8000min <sup>-1</sup>	
动力刀具电机 Power tool motor power	1.4KW	
切削油箱容量 fuel tank volume	190L	
机械尺寸 (长*宽*高) Machine size	2100*1200*1785mm	
主轴芯高 Spindle core height	1060mm	
机械重量 Machine weight	2250kg	
电器设备功率 Power of electrical equipment	5.5KVA	

# 设备参数

Equipment Parameters



## CK6046技术参数 CK6046 technical parameters

项目 item type	规格参数 specification parameter
主轴转速 speed of mainshaft	6000tpm
最大加工直径 maximum machining diameter	φ46mm
X轴行程X-axis travel	800mm
Z轴行程Z-axis travel	250mm
机床重量machine weight	2200kg
机床尺寸machine size	1900mm*1800mm* 1530mm



# 车间图

Workshop



## CNC 调控

CNC Machining



## 初级质检

First Round Quality Control



# 车间图

Workshop



## 超声波清洗

Sonicleaning



## 质检

Quality Control



## 包装

Packaging



## 准备发货

Ready for delivery



# 02 产品及证书

## Product and Certificate

东钢是以精密切削部件加工为主，主要生产电子产品、光学仪器、通讯设备、现代办公设备、医疗器材、汽车配件等相关联产品的精密零部件。产品销售网络覆盖欧美、澳洲、日、韩等世界各地。

Donggang mainly manufacture high precision turning parts.

Applications include electronic products, optical equipment, communication equipment, office equipment, medical equipment, automobile parts and other related turning parts product. Its sales distribution includes Europe, Australia, Japan, Korea and so on.



# 产品介绍

## Product Introduction



### 轴 Shaft

转子轴, 长轴, 输出轴, 电子转机轴, 连接轴, 车轴, 旋转阀轴, 旋转轴等  
Shafts include rotor shaft, long shaft, output shaft, electronic transfer shaft, connecting shaft, axle, rotating valve shaft, rotating shaft and so on.



### 螺母 Nut

压花螺母, 非标螺母, 包胶螺母等  
Embossed nut, non-standard nut, coated nut and so on.



### 紧固连接件 Fastener

过滤接头, 铜管接头, 气动接头, 连接件, 连接头等  
Filter connector, brass connector, pneumatic connector, other related customized connector and fastener.



### 喷头 Nozzle

进油口座, 油嘴喷头等  
Fuel inlet seat, fuel injector nozzle and so on.

# 产品介绍

Product Introduction



## 针头与触针 Pins

医疗设备针头，医疗顶针，汽车触针等

Syringe needle for medical equipment, ejector pin for medical use, auto part contact pin and so on.



## 铜套 Copper Bush

用于电器配件，电子产品，通讯配件的套筒

Socket for electrical accessories, electronic products and communication accessories



## 阀 Valve

滤网阀体，滤网阀座，滤网连接阀，调节阀，阀芯，阀体组件，呼吸阀等

Filtering valve body, filtering valve seat, filtering valve connector, throttle valve, valve core, valve component, breather valve and so on.

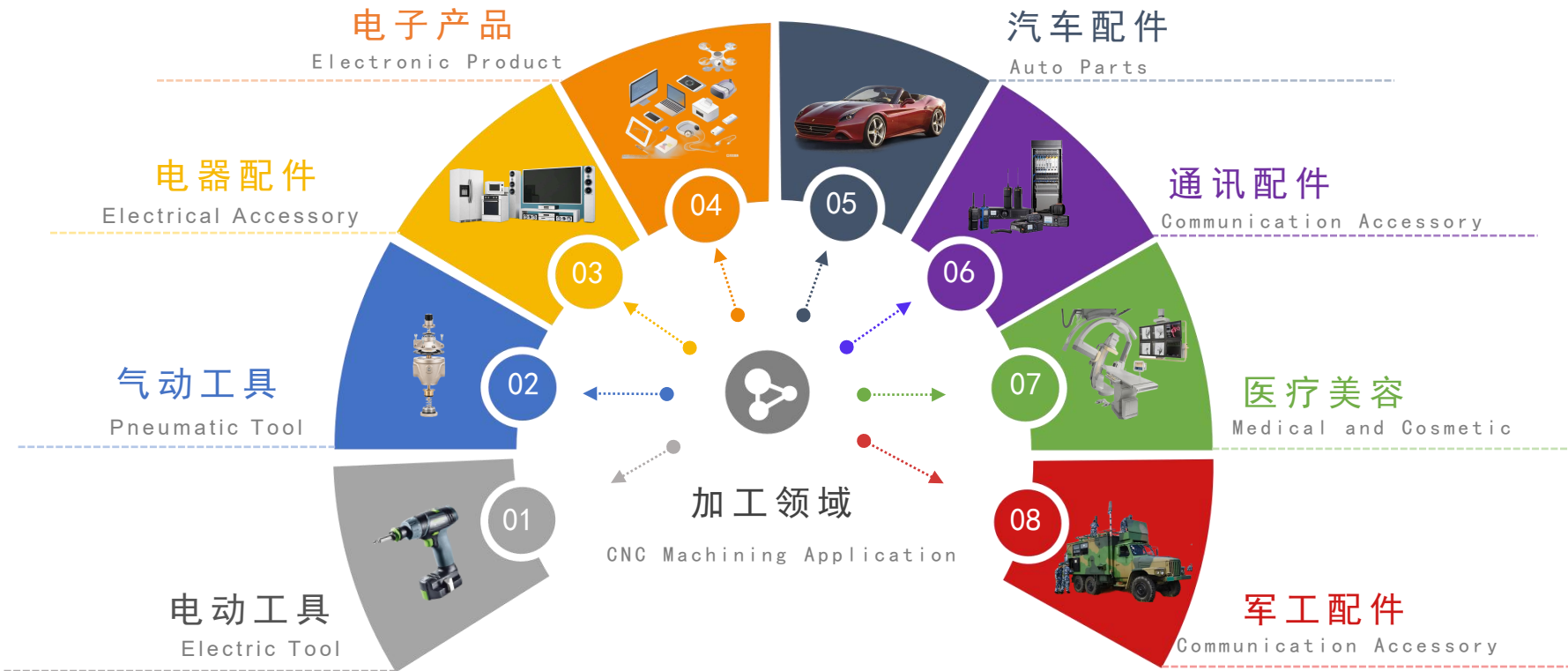


## 支架与杆子 Stand and Rod

支架，阀杆，往复杆，活塞杆等  
Stand, valve rod, reciprocating rod, piston rod and so on.

# 应用领域

Product Applications



# 原材料

Raw Material



01

## 碳钢 Carbon Steel

- S45C S20C
- 1214 12L14
- 1215 12L15
- 11SMnPb30 16MnCr5
- 40Cr 42CrMo

03

## 铝 Aluminium

- 7075
- 6061
- 6063

02

## 不锈钢 Stainless Steel

- SUS303
- 304
- 316L
- 17-4
- 420F
- 430F

04

## 其他 Others

- 黄铜 Brass
- 紫铜 Red Copper
- 青铜 Bronze
- 锡 Stannum
- 其他 so on

## 照片墙 Photo Wall



# 产品种类

Product types



## 铜材系列Copper



- 无铅环保铜 Lead-free environment-friendly copper
- 快削黄铜 Brass stick
- 青铜 Bronze
- 黄铜 Brass
- 紫铜 Brass
- 磷青铜 Phosphor bronze
- 锡青铜 Tin bronze
- 其他 So on

## 不锈钢系列Stainless steel



- |            |          |
|------------|----------|
| • SUS303   | SUS303Cu |
| • SUS304   | SUS304L  |
| • SUS316   | SUS316L  |
| • SUS410   | SUS410S  |
| • SUS420   | SUS420F  |
| • SUS430   | SUS430F  |
| • SUS440   | SUS440C  |
| • 其他 So on |          |



# 产品种类

Product types



## 快削钢系列 Quick-cut steel



- 1215
- 12L14
- 1144
- So on

## 特殊钢材 special steel



特殊钢主要包含碳钢、碳素工具钢、铬钼钢、铬钒钢、轴承钢、模具钢、耐冲击工具钢、硼钢、中碳合金钢等。  
Special steel mainly includes carbon steel, carbon tool steel, chromium molybdenum steel, chromium vanadium steel, bearing steel, die steel, impact tool steel, boron steel, medium carbon alloy steel and so on.

# 原料仓库

raw material warehouse



# 主要地域分部

Main geographical distribution



## 北美市场 North America

美国, 加拿大, 墨西哥

America, Canada,  
Mexico



## 欧洲市场 Europe

德国, 法国, 芬兰, 意大利和其他欧洲国家

Germany, France, Finland,  
Italy and other European  
Countries



## 亚太市场 Asia-Pacific

中国, 日本, 韩国, 印度, 东南亚和澳大利亚等

China, Japan, Korea,  
India, South-east Asia,  
Australia and so on.



# 认证证书

## Certificate



### 认证证书

此证书授予

苏州市东钢精工科技有限公司

统一社会信用代码: 9132092789283134

认证地址: 江苏省苏州市相城区阳澄湖镇凤阳路432号7号楼1层西面北侧

符合 IATF 16949:2016 质量管理体系标准

认证范围:

金属车削件的生产 (不包括 8.3 产品设计)

认证决定日期	版次	证书到期日期	认证周期
2022年01月20日	1	2025年01月19日	1
更新次数	首次证书发布日期	L12P No.:	
2022年01月20日	2022年01月20日	0482709	

发证人: 认证经理

本证书可在国家认证认可监督管理委员会官方网站 (www.cnca.gov.cn) 上查询。  
 凡发现认证 (机构) 有违规行为, 请至: 中国认证认可监督管理委员会投诉 599 号全国投诉人援助 800-800-8008



东钢16949中文  
2022.1月.pdf



### Certificate of Registration

This certificate has been awarded to

Suzhou Donggang Precision Technology Co., Ltd.

West and North of 1st Floor, Building 7, No.432, Fengyang Road, Yangchenghu Town, Xiangcheng District, Suzhou City, Jiangsu Province, China

In recognition of the organisation's Quality Management System which complies with

IATF 16949:2016

The scope of activities covered by this certificate is defined below

Manufacture of Metal Turning Parts (Excludes Product Design under Clause 8.3)

Date of Issue of Certificate	Issue Number	Certificate Expiry Date	Certification Cycle
20 January 2022	1	19 January 2025	1
Revision Date	Revision Number	Original Certificate Issue Date	Scheme Number
20 January 2022	1	20 January 2022	0447309

For detailed explanation for the data fields above, refer to: <http://www.irs-certification.com/registration>

Issued by



On behalf of the Schemes Manager



Donggang 16949  
Enq Version2022.1

证书号 20066649 号



### 实用新型专利证书

实用新型名称: 一种精密零件切削刀具的装配机构

发明人: 沈平, 杨建, 周朝龙, 潘磊

专利号: ZL 2021 2 16557 48.6

专利申请日: 2023年06月28日

专利权人: 苏州市东钢精工科技有限公司

地址: 215144 江苏省苏州市相城区阳澄湖镇凤阳路432号7号

楼4层西面北侧

授权公告日: 2023年11月24日

授权公告号: CN 220073313 U

国家知识产权局依照中华人民共和国专利法经过初步审查, 决定授予专利权, 颁发实用新型专利证书并在专利登记簿上予以登记。专利权自授权公告之日起生效。专利权期限为十年, 自申请日起算。

专利证书记载专利权的法律状况, 专利权的转移、质押、无效、终止、恢复和专利权人的姓名或名称、国籍、地址变更等事实在专利登记簿上。



局长  
申长雨



第1页(共2页)

其他事项参见续页



东钢【专利证  
书】(1).pdf





03

# 企业优势

Corporate Advantage



# 企业优势

Corporate Advantage



## 技术团队 Technical Team

成熟的技术体系，专业的技术团队，拥有近百名技工人。  
Mature technical system, professional technical team with nearly 100 skilled workers.



## 完善的设备 Complete Equipments

东钢拥有自己的标准化厂房，生产及检测设备先进、齐全。  
Donggang has its own standardized factory, advanced and complete production and testing equipments.



## 国际认证检测

International Certification Testing

每项材料均为原厂品质保证，以客户品质为第一优先，做到自检、互检、专检相结合，保障100%产品合格率  
Each material is the original factory quality assurance, customer quality as the first priority, to achieve the combination of self-inspection, mutual inspection, special inspection, to ensure 100% product pass rate



## 充足的供货体系 Adequate Supply System

及时的供货周期，完善的服务品质，创造优化合理的价格  
Timely delivery cycle, perfect service quality, optimized and reasonable prices



# 感谢您的观看

THANK YOU FOR WATCHING

---



Website: <https://www.turningpartsfactory.com>

Email: [info@turningpartsfactory.com](mailto:info@turningpartsfactory.com)

Fax: +86 0512 - 65761009

Tel: +86 0512- 65761109 / 0512- 65761399

Address: 中国江苏省苏州市相城区阳澄湖凤阳路432号  
No. 432, Fengyang Road, Yangcheng Lake, Xiangcheng  
District, Suzhou, Jiangsu, China